



High Performance from Rexnord

Leaf chains | Factory standard





RexPro
RexPro lubrication
improved wear resistance
high fatigue resistance

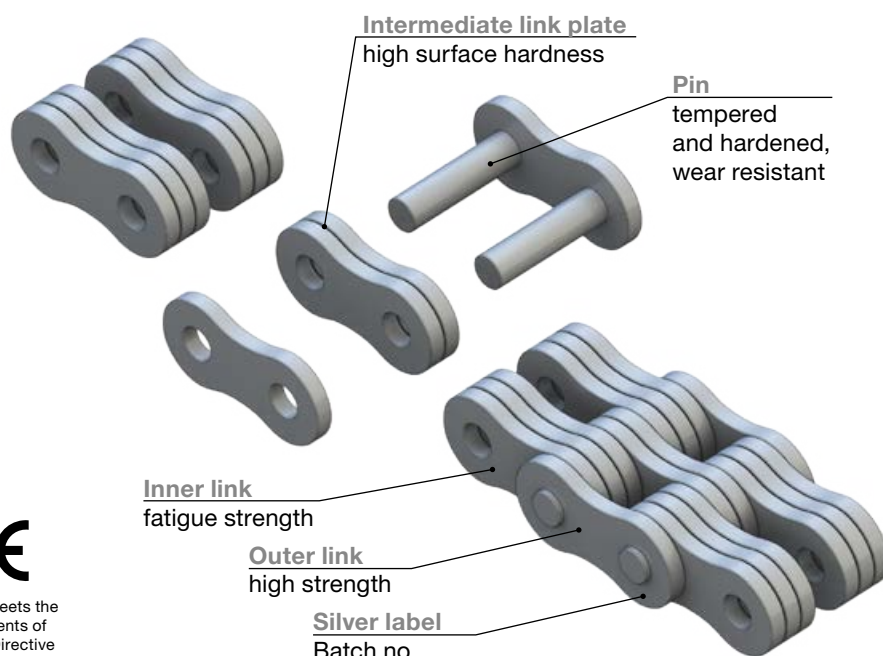


Leaf chains - Factory standard

High Performance from Rexnord.



Rexnord meets the
requirements of
Machine Directive
2006/42/EC



APPLICATIONS

- Forklift trucks, telehandlers
- Material handling
- Machine tools

CHARACTERISTICS

- Improved protection against chain joint stiffness
- Improved wear resistance
- Excellent corrosion resistance
- Very eco-friendly
- Made from high-quality materials
- Ball-drifted plate holes
- "Silver label" batch number for better traceability
- Shot-peened pins and link plates
- NSF H2 certification, RoHS:2005 conformity

ADVANTAGES

- Minimal running-in elongation
- Long service lifespan
- Extremely shock resistant
- Very robust, even in difficult conditions
- Maximum operating reliability
- Improved cost-effectiveness

LUBRICATION

- RexPro lubricants without heavy metals for outstanding protection
- Operating temperature: -30° C to +130° C (can be extended to -40° C to +250° C)
- Very good surface adhesion; drip-resistant even at high temperatures
- No heavy metals, Teflon- and silicone-free

RexPro - Leaf chains - High performance from Rexnord



Excellent Corrosion Protection

- 8-10 times better than the best competitors
- More than 100% better in the buckling test
- Highly versatile, also suitable for aggressive environments



Improved Wear Resistance

- 8-12% improvement in comparison to predecessor
- Great protection through RexPro lubrication
- Long working life
- High operating reliability



High Fatigue Resistance

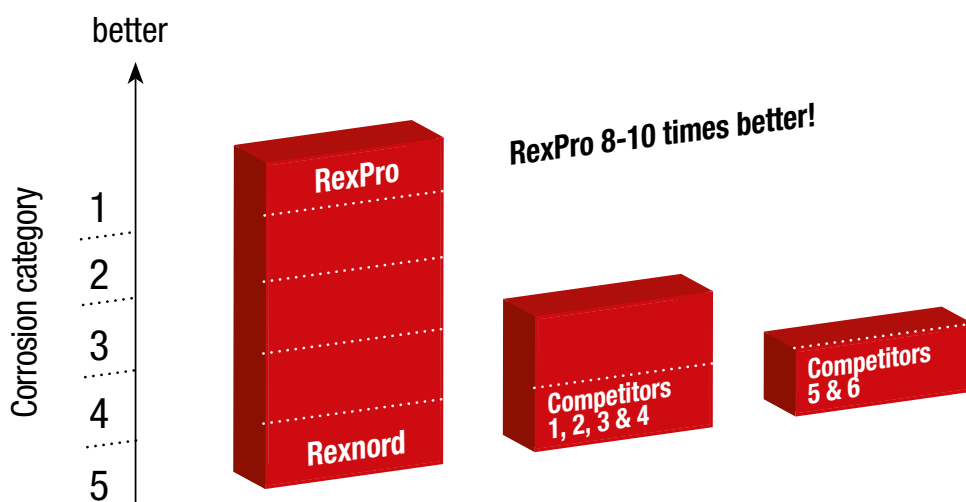
- Ball-drifted plate holes
- Shot-peened chain links
- High pre-loading



Eco friendly

- Through RexPro lubrication
- No heavy metals; Teflon- and silicone-free
- Environmental management system conforms to DIN EN ISO 14001

Salt spray test in accordance with DIN EN ISO 9227



Rexnord meets the requirements of Machine Directive 2006/42/EC

Leaf chains - Factory standard

High Performance from Rexnord.



Rexnord meets the requirements of
Machine Directive 2006/42/EC



Excellent Corrosion Protection

- 8-10 times better than the best competitors
- More than 100% better in the buckling test
- Highly versatile, also suitable for aggressive environments



Improved Wear Resistance

- 8-12% improvement in comparison to predecessor
- Great protection through RexPro lubrication
- Long working life
- High operating reliability



High Fatigue strength

- Ball-drifted plate holes
- Shot-peened chain links
- High pre-loading

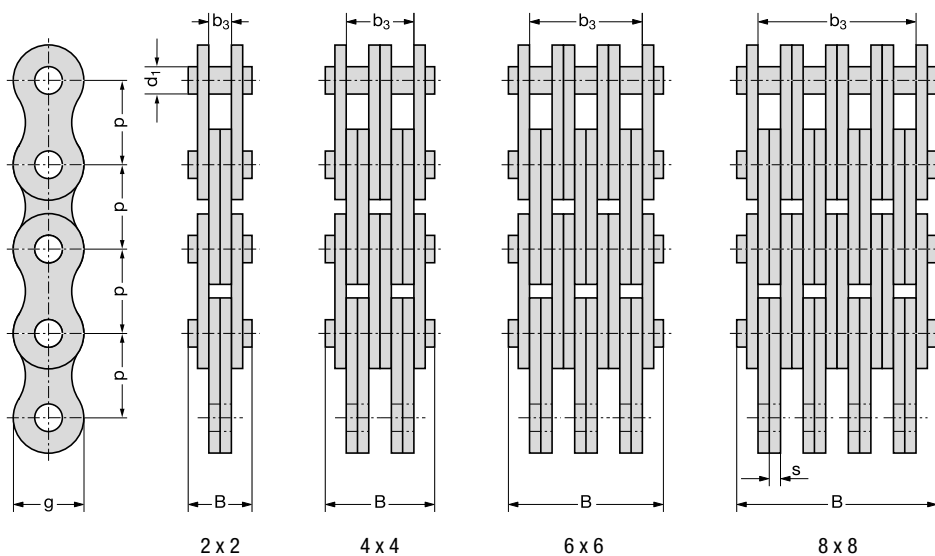


Eco friendly

- Through RexPro lubrication
- No heavy metals; Teflon- and silicone-free
- Environmental management system conforms to DIN EN ISO 14001

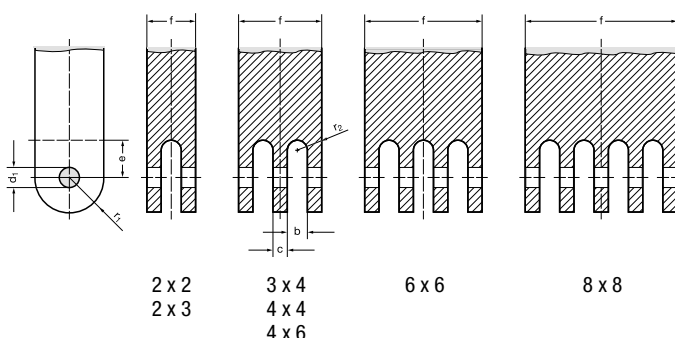
Leaf chains - Factory standard

Chain No.	ISO chain number	Pitch		Lacing	Pin diameter	Plate depth	Thickness of plates	Length over 100 pitches	Overall width	Bearing area	Rexnord min. tensile strength	Weight
		p			d ₁ max.	g	s	■	B max.	A	F _B	q
	ISO/DIN	inch	mm		mm	mm	mm	mm	mm	cm ²	N	kg/m
F 6 H - 5	—	0.625	15.875	2 x 3	4.75	14.6	2.5	1592	14.9	0.24	30 300	1.0
F 19 V - 44	—	0.75	19.05	4 x 4	6.50	15.2	2.35	1901	22.8	0.61	80 000	1.8
F 19 V - 66	—	0.75	19.05	6 x 6	6.50	15.2	2.35	1901	32.7	0.91	120 000	2.5
834 (SK 507)	—	1.00	25.4	3 x 4	10.85	23.4	IL /AL	2544	28.4	1.37	125 000	3.6
432 (SK 508)	—	1.00	25.4	6 x 6	10.85	23.4	3.05/4.0	2544	44.4	2.06	250 000	5.9



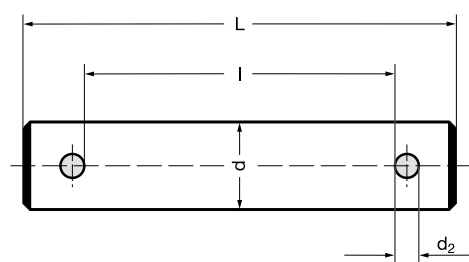
Recommended chain anchor dimensions for connecting leaf chain inner links

Chain No.	Inner link connector dimensions						
	f	b	c	d ₁	e	r ₁	r ₂
	max.	min.	max.	D 10	min.	max.	max.
F 19 V - 44	22.9	5.2	4.7	6.6	10.0	10.5	2.0
F 19 V - 66	32.9						



Connecting pin for attaching leaf chains to chain anchor

Chain No.	Connecting pin	Connecting pin dimensions			
		order no.	l min.	L max.	d max.
F 19 V - 44	709 - 206 - 44		23.0	30.2	6.5
F 19 V - 66	709 - 206 - 66		33.0	40.3	2.0



All pins are fitted with 2 cotters and – from BL 1234 and F 38 upwards – with 2 additional washers.

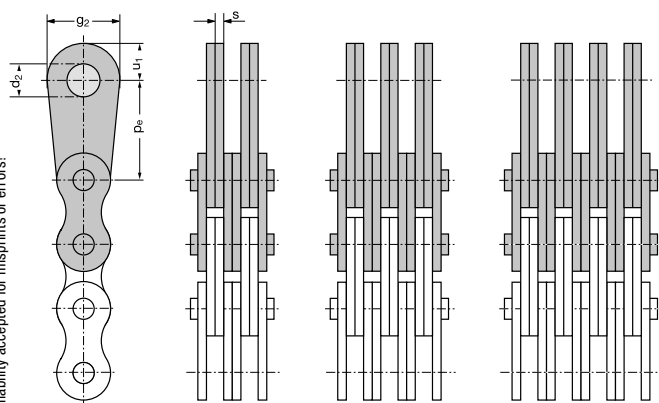
Leaf chain anchoring

Chain No.	End link order no.		Dimensions in mm				
	IEG	AEG	Pe	d ₂ A11	g ₂	s	u ₁
F 19 V - 44	170 - 120 - 44	45	25	10	19.8	1.8	11.2
F 19 V - 66	170 - 120 - 66	65					

End links are available as inner and outer links. Ordering example for end links to fit leaf chain F 19 V - 44:

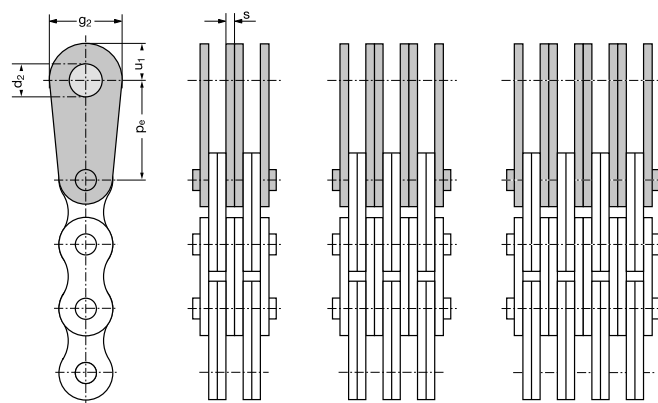
a) as IEG (inner end link): 170-120-44 b) as AEG (outer end link): 170-120-45

End links as inner links (IEG)



Scope of delivery:
End links (pear-shaped) along with leaf chain
outer link supplied as a complete ready-to-rivet sub-assembly.

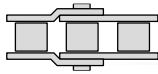
End links as outer links (AEG)



Scope of delivery:
End links (pear-shaped) and matching ready-to-rivet pin.

Overview Rexnord roller chains

Roller Chains



- Outstanding protection against corrosion and wear
- Unique protection against chain joint stiffness
- Extremely eco-friendly

- Durable and low-maintenance
- Longer servicing intervals
- High loading capacity

- Maintenance-free
- Low noise
- Eco-friendly

- Excellent resistance to rust and acids
- Highly reliable
- Fulfills hygiene requirements
- NSF H1 certification

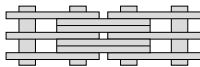
- Combination of RexPlus and RexCarbon
- Excellent resistance to rust and acids
- Maintenance-free
- NSF H1 certification

- Outstanding corrosion resistance
- Long service life
- High loading capacity

- The optimum choice for light and medium duty
- Good cost-benefit ratio
- High availability

- Extremely high loading capacity
- Long service life
- Outstanding protection against corrosion and wear

Leaf Chains



- Outstanding protection against corrosion and wear
- Unique protection against chain joint stiffness
- Extremely eco-friendly

- Outstanding corrosion resistance
- Long service life
- High loading capacity

- Durable and low-maintenance
- Longer servicing intervals
- High loading capacity
- Extreme wear resistance for double-length service life

- The optimum choice for light and medium duty
- Good cost-benefit ratio
- Good availability